

# SIMPLIFIED ARCHITECTURE FOR SMALL OFFICE PROFESSIONAL

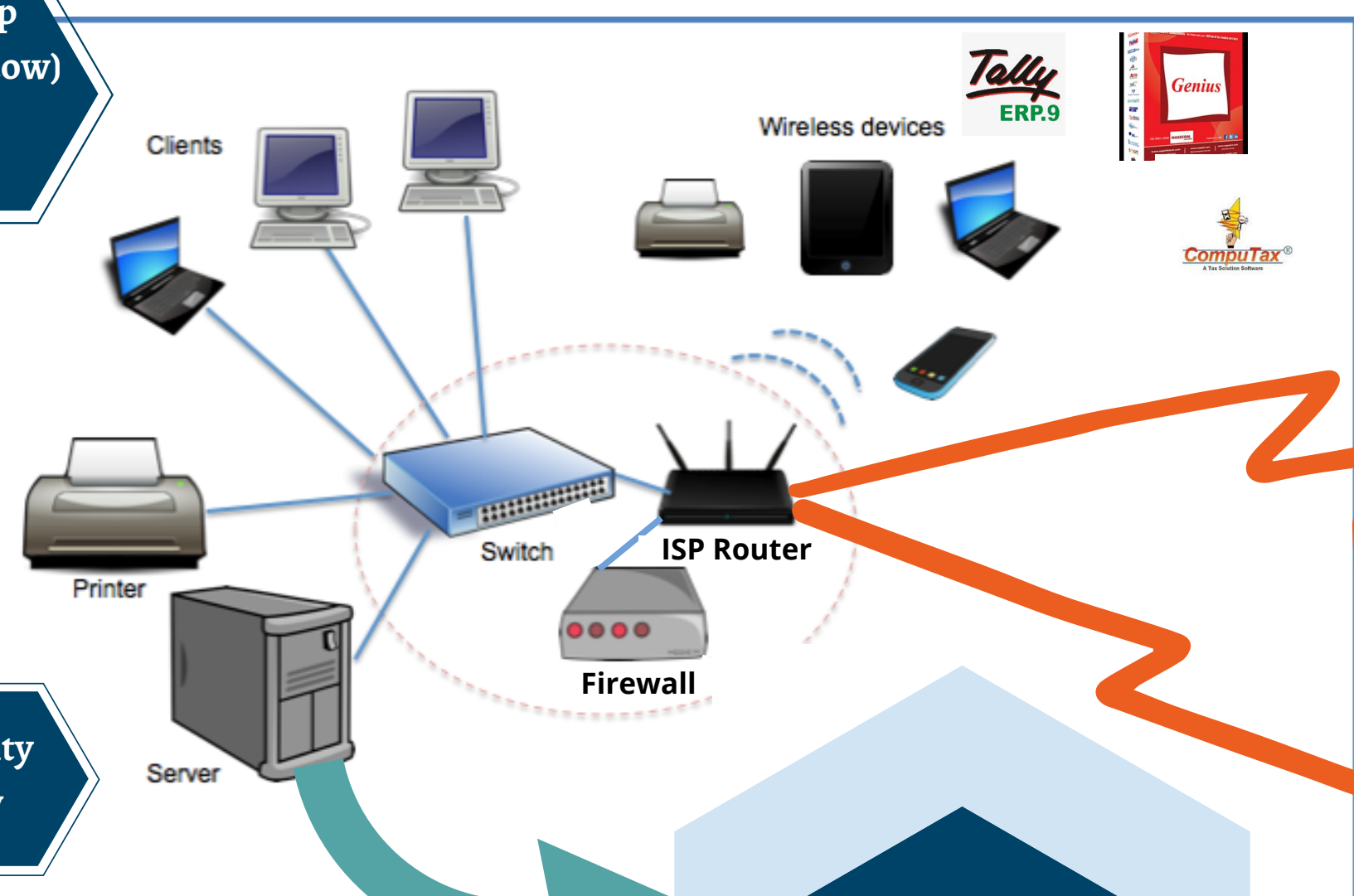


## On Premise/ Home/ Outside Location

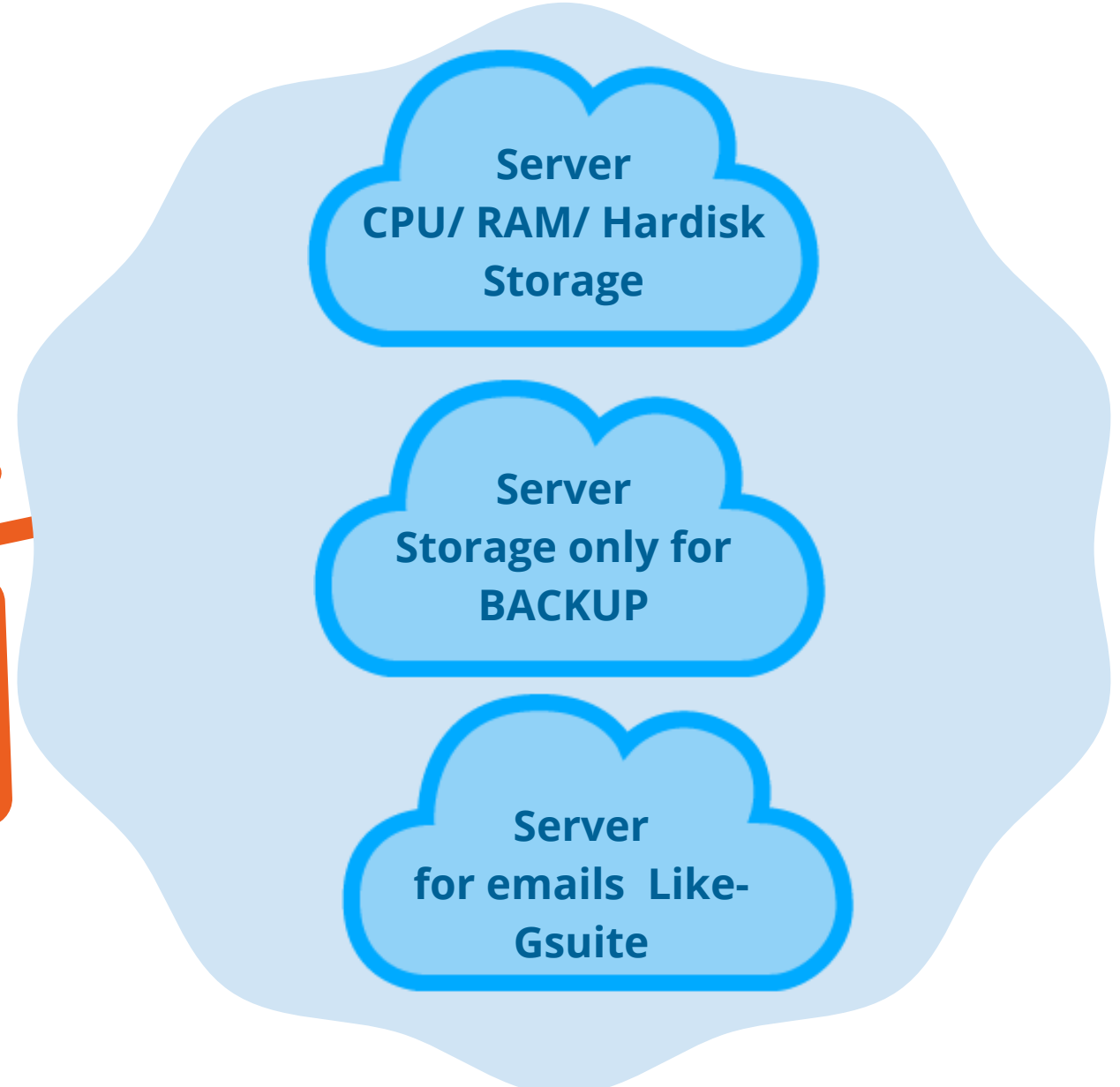
## Cloud

- PC/ Laptop
- OS (Window)
- Antivirus
- O365

Security Policy



Internet Bandwidth (Broadband OR Leased Lines)



Government Regulatory (Income Tax, GST etc.)

Server:-  
For running On-Premise applications like: office attendance, CCTV, or Business apps such as Tally, Genius etc.

- Government Regulatory Provides
- ePrompto Provides

# Factors Affecting Application Performance On Cloud

## END USER

### 1) Internet Bandwidth

- Broadband is made of 2 parts Upload speed & Download speed.
- Download speed is at least 4 times more by all service providers to earn revenue . When you stream YouTube or read news or Gmail or Browsing it is Download speed.
- Upload is used by business to upload document with GST Site, Gmail attachment, One Drive Backup, Data Transfer.

### 2) End User Laptop/ PC Configuration

- Adequate RAM and CPU for the Operating System.
- Firewall/ Antivirus blocking website.

## INTERNET

- Service Provider of cable/ Internet can reduce speed (throttle speed) if bill not paid or data quota of downloads is exceeded.
- Fibre Cut.
- If using Dongle or phone for internet, check the signal strength i.e. if you are getting full 4-5 bar on your network connection.

## SERVER

- Bandwidth at Data Center where server is hosted, should be 1:1 for Download and Upload.
- Also depends on number of users simultaneously accessing the server.
- CPU/ RAM for application should be sufficient and utilization- not more than 70%.
- Firewall / VPN blocking some sites on ports.
- Antivirus blocking site / Port for malicious activity.

### Recommendation

Jio 4 G Plan with 8GB Data  
Broadband should be 8 Mbps- 1:4  
(Download: Upload)

### Recommendation

For Office LAN/WAN fibre is preferred  
Network coverage on Phone is many times poor inside office

### Recommendation

2 CPU/ 4GB RAM for up to 10 users

**SPEED TEST**



**Call**



**WhatsApp**



**Email**



**Web**



**Location**

**Bouquet of Products and Services for CAs by ePrompto**



Sr no.	Product / Service	Description	UOM	Unit Cost (exclusive of taxes) INR	Features	Remarks
<b>Cloud Offerings</b>						
1	Tally On Cloud	A server on cloud with compute(CPU), RAM and storage for running TALLY and Income Tax software	Per user per year	8500	Adequate CPU, RAM and upto 20GB per user storage. Backup of data, Antivirus on server, user access control	<ul style="list-style-type: none"> <li>• Users can access from anywhere and anytime.</li> <li>• Users can print on their Local Printers.</li> <li>• Users can get their Files, exported from Tally, right on their local PCs.</li> <li>• With help of Remote Desktop Clients, Tally can be used from any devices.</li> <li>• Tally Data can be easily migrated to Tally on Cloud</li> <li>• Tally Data is highly secured on Tally on Cloud.</li> <li>• No need to have multiple Tally Licenses.</li> <li>• No need to maintain Hardware on premises.</li> <li>• Tally users from any location can print on printers at any location.</li> <li>• No need to sync Tally Data between different Branches of organisation.</li> <li>• Tally can be centrally upgraded for allusers.</li> </ul>
2	O365	Storage for Backup on Cloud- Anytime , Anywhere access	Per user per year	1500	O365 license with 1 TB Cloud Storage Per User	<ul style="list-style-type: none"> <li>• Tally Data backup on One Drive</li> <li>• You get original Microsoft license (Word, Excel, Powerpoint, Outlook).</li> <li>• Local Data Of Laptop/Desktop can be backed up Automatically On One Drive. Data can be Accessed Anytime, Anywhere and on Any Device.</li> </ul>
<b>Eprompto AMC services</b>						
1	Remote Management of all user level PC/Laptop issues on email, O365,Antivirus, OS Updates,Email backup	Per device per year	2000	Includes vendor coordination for spare parts if PC under warranty, engineering and advise on products to be bought	<ul style="list-style-type: none"> <li>• Managing all your IT related problems remotely.</li> <li>• We help you to maintain uptime of your systems.</li> </ul>	
2	Remote Management of Network issues on wifi, LAN, WAN (Broadband /Leased Lines)					<ul style="list-style-type: none"> <li>• Quaterly Preventive Maintenance for Better Performance</li> </ul>
3	Patching for security updates and preventive maintenance of all PC/ Laptops					<ul style="list-style-type: none"> <li>• We help you keep your systems up to date.</li> </ul>
4	Removal of unwanted softwares from end user devices					<ul style="list-style-type: none"> <li>• We help you improve the performance of the existing systems. Unwanted applications consume your device's resources.</li> <li>• We help you analyse and remove such applications.</li> </ul>
5	Blocking of sites, USB and encryption of data, if required					<ul style="list-style-type: none"> <li>• We help you restrict websites, USB device.</li> <li>• Data encryption will help you secure your data at source.</li> </ul>
6	Ticket Management & Asset Management					<ul style="list-style-type: none"> <li>• All your issues can be tracked and monitored.</li> <li>• All your software and Hardware asset details will be available at a centralized location.</li> </ul>
<b>Products and Softwares</b>						
1	PC and Laptops purchase	As per requirement		OEM latest machines from HP and DELL. Avoid end of life and over configured machines for your business		
2	Antivirus License	Per user per year	1250	Centrally Managed policy, Safe Banking, Control on website traffic		
3	VPN on premise Device (Secure Connection)	As per requirement and sizing starting at Rs 10,000/ for small office to Rs 25,000 for large offices. One time cost with 3 years AMC support				
4	VPN on Cloud	Along with Cloud server for access and control				